



PLTW Virtual Learning

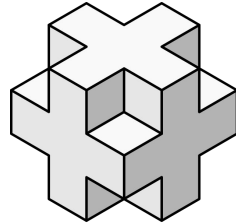
6th Grade Intro to Gateway

April 30, 2020

6th Grade Intro to Gateway
Lesson: April 30 (Part 4 of 5)

Objective/Learning Target:

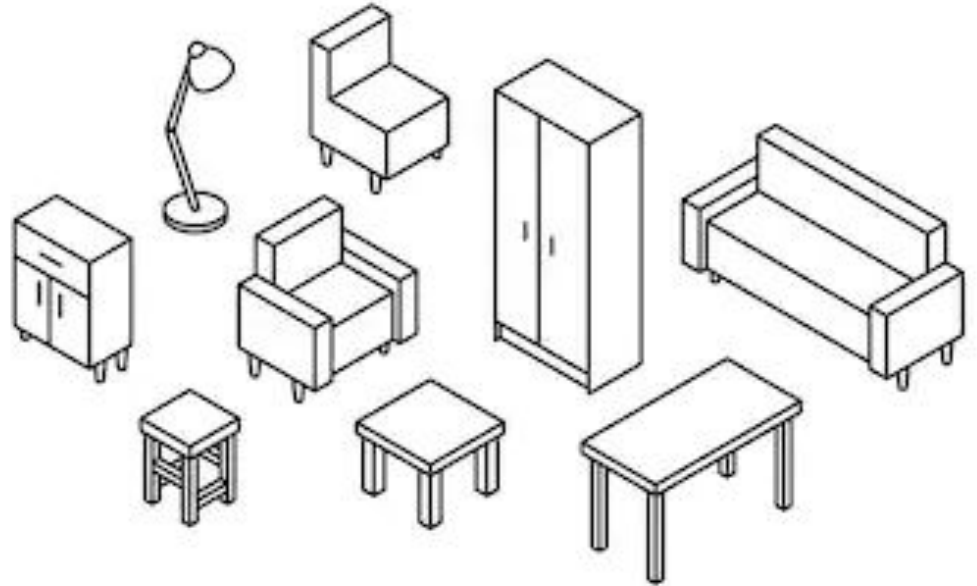
Students will understand when engineers use isometric views and apply these drawings in a real world situation.

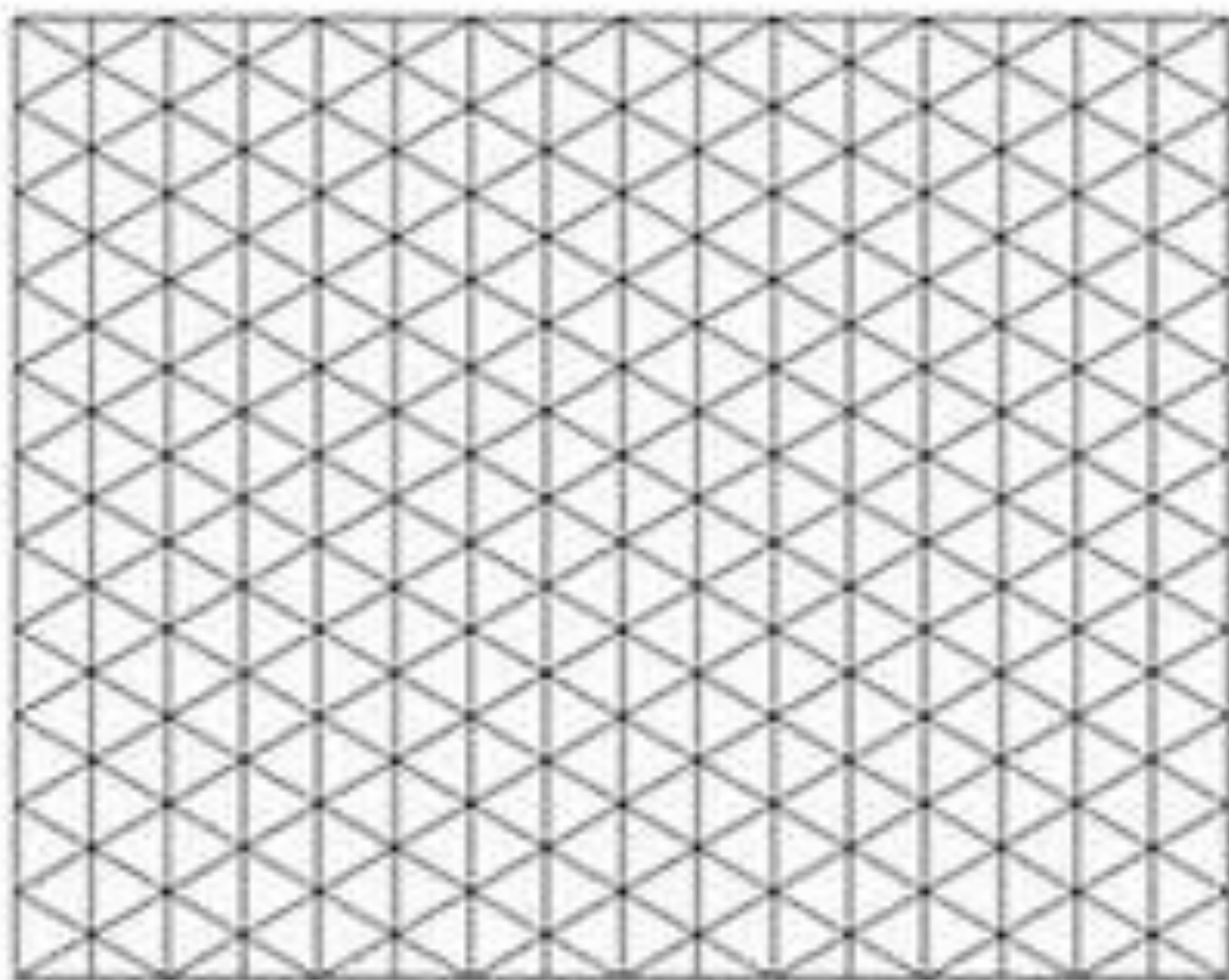


Warm-Ups:

Great job yesterday drawing household items in isometric view.

Try drawing 2 of the pieces of furniture.





Lesson Introduction/Background Information:

The next two days you are going to be drawing an isometric view of a room, similar to the way an architect or interior designer would.

After watching the videos, complete the Venn Diagram on the next slide.

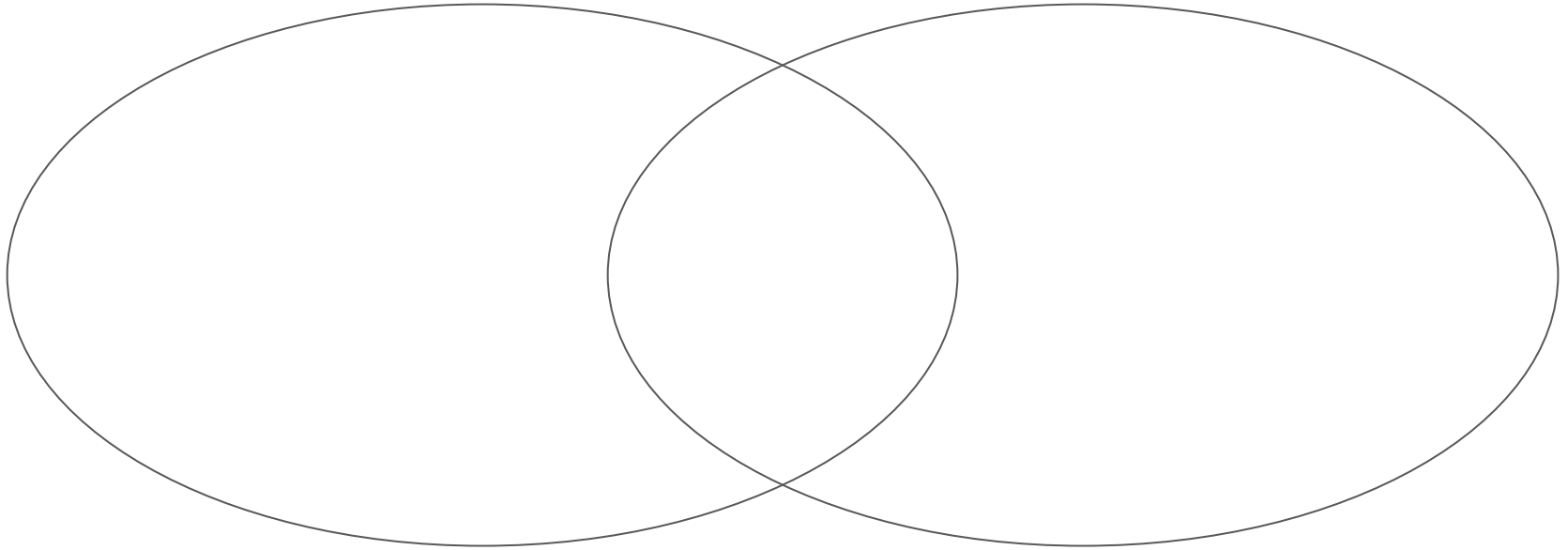
Watch Videos:

[Architect](#)

[Interior Designer](#)

Architect

Interior Designer



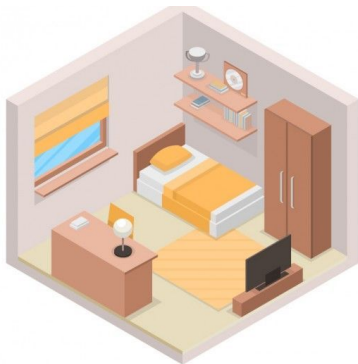
Include the following information in your Venn Diagram:

- Job Description
- Skills
- Education

Practice:

Now we are going to practice drawing/designing a room. For this activity we will focus on a bedroom. You have the option of drawing your room as it currently is or you can design your dream bedroom. Have fun with this!

Today we will be focusing on the structure of the room. By the end of today your design will include walls, floor, windows, and doors. Tomorrow we will add the furniture.



designed by freepik.com



Practice:

We will be using this online isometric drawing program to complete our design. I have provided a video to help you begin navigating the program.

<https://icograms.com/icograms-designer.php>

Watch Video: [Isometric Room Part 1](#)

You will need to keep this to add to tomorrow. The website does not automatically save for you and if you close the tab it will be deleted. If you can, keep the tab open until you finish tomorrow!

Self-Assessment:

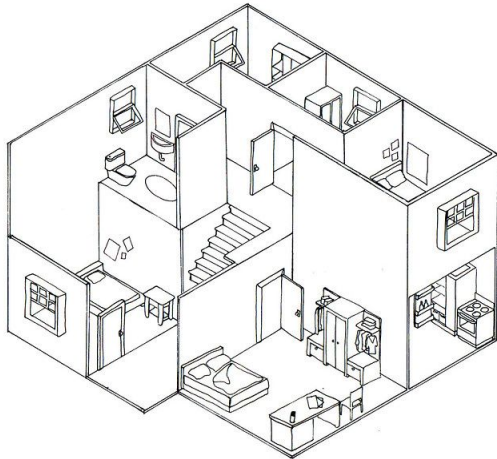
What makes isometric view helpful to architects and interior designers?

Is there anything they would need to see that is not in this view?

Extend Your Learning/Continued Practice:

Click on the links below to get additional practice and to check your understanding!

You don't have to stop at your bedroom. If you would like to add rooms to your design keep going.



If you would like more information about architects and interior designers click [here](#).